



**THE  
CAPITOL  
GROUP**

**OEM/ADVANTAGE™  
OEM/A-DS™ DATA SOLUTIONS  
PRODUCT INFORMATION**



This document and its contents are proprietary and comprise legally protected subject matter belonging to The Capitol Group, Inc., and it is loaned on the basis of a confidential relationship. All use, its reproduction, and disclosure are strictly controlled and prohibited without the prior written consent of The Capitol Group, Inc.

---

### **Revision History**

Version 22-Apr-2011      Initial Document release

---

### **The OEM/A DS Supplier Guide:**

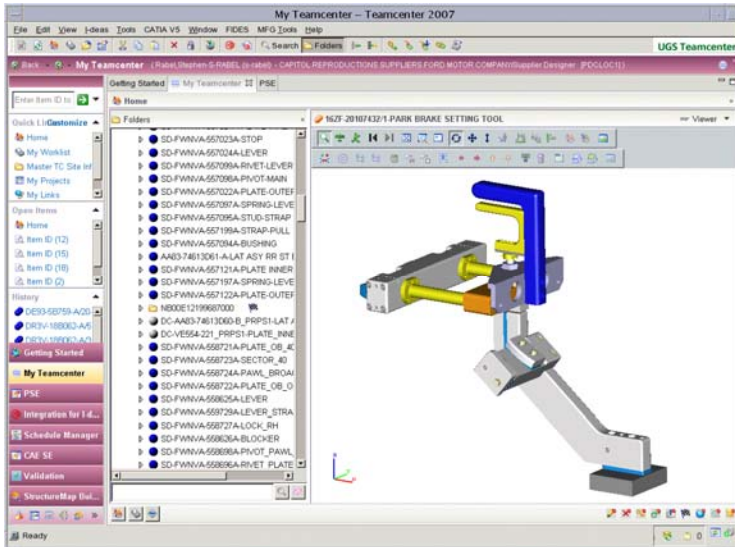
The purpose of this guide is to provide Information to Ford Suppliers using OEM/A DS services, outlining the basic DS services offered.



## Table of Contents

Section 1: OEM/A DS Product Overview .....	4
Section 2: OEM/A DS Key Contact Information .....	5
Section 3: OEM/A DS Core Product List.....	6
Section 4: OEM/A-DS Package Levels .....	7
Section 5: Using OEM/A DS Services .....	8
Section 6: Payment Options .....	9
Section 7: OEM/A DS Full list of services .....	10
Section 8: OEM/A DS Additional Contact Information .....	11

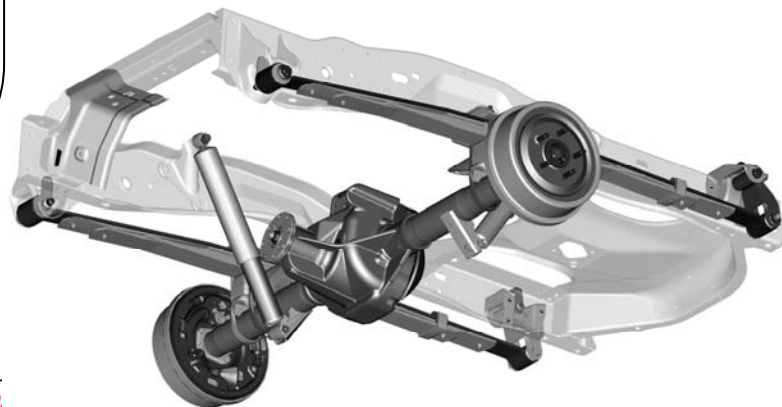
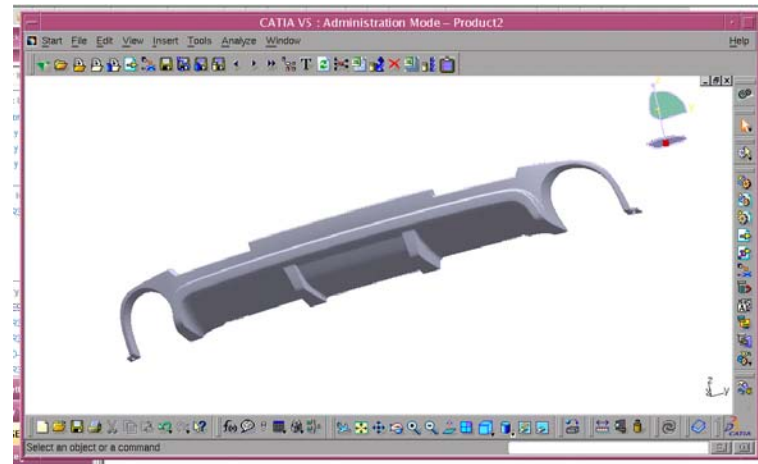
## Section 1: OEM/A DS Product Overview



OEM/A-DS is a full line of services designed to help you meet all the requirements of being a Ford full service supplier with the added convenience of being able to create, track and download your data directly from the OEM/A web site.

### The Key benefits of using OEM/A-DS are access to:

- A team experienced in all aspects of Ford requirements
- Data pulled directly from TCE
- Data Conversion services where needed
- CAD services that meet Ford requirements
- Store completed CAD data back into TCE
- Ford workflow requirements such “folder packages” and other Ford group specific release requirements





## Section 2: OEM/A DS Key Contact Information

For additional information / support, please use the following contacts:

Contact Type	Contact Name	Contact Information
<b>Inquiries regarding:</b> <ul style="list-style-type: none"><li>• Setting up Data Solutions</li><li>• Questions on products and services</li><li>• Questions on pricing</li></ul>	Gordon Booth Manager, Global Product Development	Phone: +1-313-564-4820 x16 Email: <a href="mailto:gordon@capitolgroup.net">gordon@capitolgroup.net</a>
<b>Inquiries regarding:</b> <ul style="list-style-type: none"><li>• Ford Data Structures</li><li>• Ford Team Center and processes</li></ul>	Michael Gorden Manager, Supplier Support Team	Phone: +1-313-564-4820 x30 Email: <a href="mailto:michaelg@capitolgroup.net">michaelg@capitolgroup.net</a>
<b>Inquiries regarding:</b> <ul style="list-style-type: none"><li>• General questions</li><li>• OEM/A support</li></ul>	Support Desk	Phone: 1-888-788-7988 or +1-313-564-4820 x20 Email: <a href="mailto:support@oem-advantage.net">support@oem-advantage.net</a>

## Section 3: OEM/A DS Core Product List

### OEM/A Data Solutions Core Product Services

#### Download Reference Data from Team Center

- A “data package” of requested data is created
- Users can then request either a visual envelope of data or actual CAD data.

#### Data Conversion

- Conversion to neutral formats such as .JT, STEP or IGES or Parasolid
- Conversion to/from CAD formats such as Catia, UG-NX, Solid Works, I-deas and AutoCAD
- Parametric translations and re-modeling are available

#### Check-out data from Team Center for a Design Change

- When it is time to make design changes to the CAD data, it will be checked-out and sent to the user's OEM/A mailbox

#### CAD Design Services

- Full CAD design services to Ford specifications
- Remodeling of existing CAD data
- 2D drawing services

#### Check-in data Team Center

- When the design change is complete, the user uploads the data via OEM/A, the OEM/A team will verify the data, and it is then checked-in to TCE

#### Workflow

- Data Solutions provides a full range of TCE workflow processes, including job status, design approval, 2D approval and PPAP



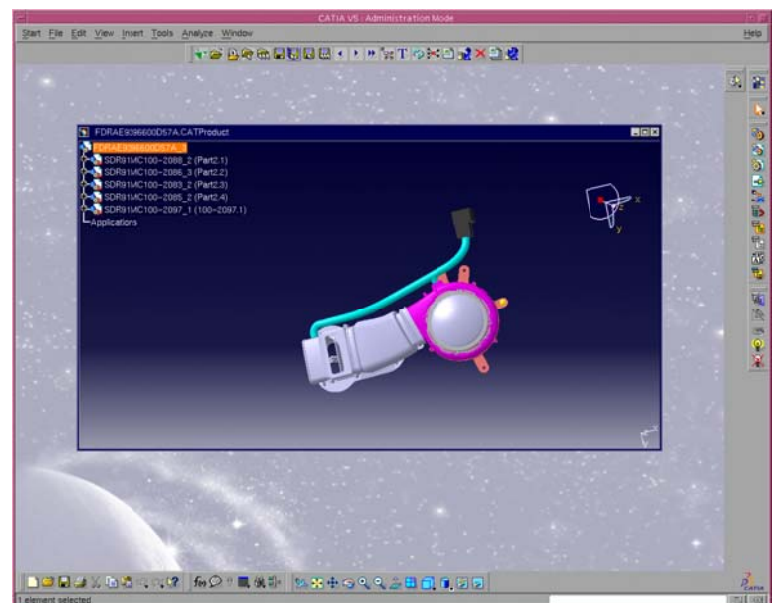
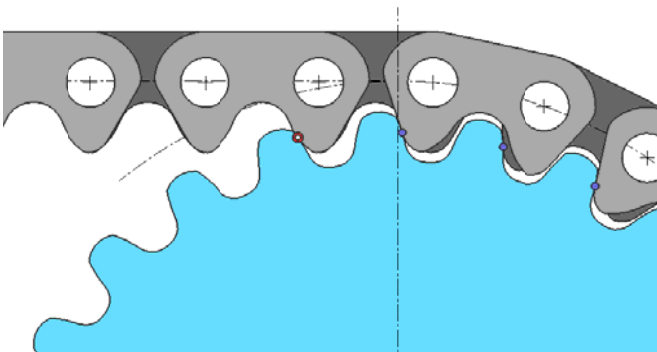
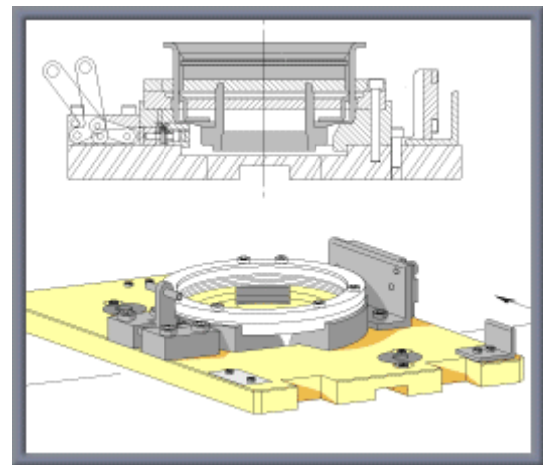
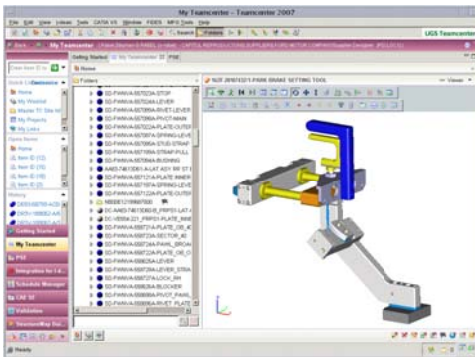
## Section 4: OEM/A-DS Package Levels

Product/Service	Description
<b>Product Development Process Service (Silver Level)</b>	<ul style="list-style-type: none"><li>Customer has data “Ford” ready and understands all aspects of the Ford processes. The “Silver” level provides customers with Check-out, Data Validation and Check-in service.</li></ul>
<b>Product Development Process Service (Gold Level)</b>	<ul style="list-style-type: none"><li>For Customers that do their own CAD design work in Ford approved CAD systems, but need full assistance in with the Team Center workflow process</li></ul>
<b>Product Development Process Service (Platinum Level)</b>	<ul style="list-style-type: none"><li>Full service, including CAD design (or remodeling of customers CAD design into Ford CAD systems) and full assistance with the Team Center workflow process, including communication with the Ford engineer.</li></ul>

## Section 5: Using OEM/A DS Services

OEM/A users can access all DS services on line from their OEM/A accounts.

For full step-by-step instructions on submitting job, please see the “OEM/A-DS Supplier Guide” in the PDF library section on the Capitol web site.





## Section 6: Payment Options

### Payment Options

<b>Credit Cards</b>	Visa, Master Card and American Express
<b>Electronic Funds Transfer (EFT)</b>	North America and International
<b>Purchas Orders</b>	For customers with established Capitol Group credit histories



## Section 7: OEM/A DS Full list of services

### Product Directory

Service Category	Service Description
<b>Download Reference data from Team Center</b>	<ul style="list-style-type: none"> <li>Provide a visual envelop of the design structure</li> </ul>
	<ul style="list-style-type: none"> <li>Download actual CAD data</li> </ul>
	<ul style="list-style-type: none"> <li>Updated iteration download of reference data from TCE</li> </ul>
<b>Check-out data for change</b>	<ul style="list-style-type: none"> <li>Apply for program/system permissions (if needed)</li> </ul>
	<ul style="list-style-type: none"> <li>Change ownership to supplier (if needed)</li> </ul>
	<ul style="list-style-type: none"> <li>Search for correct parts, assemblies and/or DS</li> </ul>
	<ul style="list-style-type: none"> <li>Check-out data for change, download data and send via OEM/A</li> </ul>
<b>Complete CAD Design Service</b>	<ul style="list-style-type: none"> <li>Design from scratch</li> </ul>
	<ul style="list-style-type: none"> <li>Remodeling of existing CAD data</li> </ul>
	<ul style="list-style-type: none"> <li>Modeling from 3D scanned images</li> </ul>
	<ul style="list-style-type: none"> <li>2D drawings</li> </ul>
<b>Check-in data</b> (Note: data being checked in, must have gone through the proper check-out process above)	<ul style="list-style-type: none"> <li>Validate data to Ford standards</li> </ul>
	<ul style="list-style-type: none"> <li>Upload and check-in data to TCE</li> </ul>
<b>Workflow</b>	<ul style="list-style-type: none"> <li>Freeze/Publish</li> </ul>
	<ul style="list-style-type: none"> <li>2D approval</li> </ul>
	<ul style="list-style-type: none"> <li>3D notes</li> </ul>
	<ul style="list-style-type: none"> <li>PPAP</li> </ul>
	<ul style="list-style-type: none"> <li>Folder process</li> </ul>
<b>Data Conversion</b>	<ul style="list-style-type: none"> <li>Translation to STEP or IGES</li> </ul>
	<ul style="list-style-type: none"> <li>Translation to .JT</li> </ul>
	<ul style="list-style-type: none"> <li>Translation to Parasolid</li> </ul>
	<ul style="list-style-type: none"> <li>Translation to other CAD formats</li> </ul>
	<ul style="list-style-type: none"> <li>Parametric Translation and re-modeling</li> </ul>



## Section 8: OEM/A DS Additional Contact Information

For additional information / support, please use the following contacts:

Contact Type	Contact Name	Contact Information
<b>Inquiries regarding:</b> <ul style="list-style-type: none"><li>• Setting up Data Solutions</li><li>• Questions on products and services</li><li>• Questions on pricing</li></ul>	Gordon Booth Manager, Global Product Development	Phone: +1-313-564-4820 x16 Email: <a href="mailto:gordon@capitolgroup.net">gordon@capitolgroup.net</a>
<b>Inquiries regarding:</b> <ul style="list-style-type: none"><li>• Ford Data Structures</li><li>• Ford Team Center and processes</li></ul>	Michael Gorden Manager,	Phone: +1-313-564-4820 x30 Email: <a href="mailto:michaelg@capitolgroup.net">michaelg@capitolgroup.net</a>
<b>Inquiries regarding:</b> <ul style="list-style-type: none"><li>• General questions</li><li>• OEM/A support</li></ul>	Support Desk	Phone: 1-888-788-7988 or +1-313-564-4820 x20 Email: <a href="mailto:support@oem-advantage.net">support@oem-advantage.net</a>